

\$2,490,000 - 4815 14a Street Sw, Calgary

MLS® #A2219622

\$2,490,000

5 Bedroom, 4.00 Bathroom, 2,694 sqft

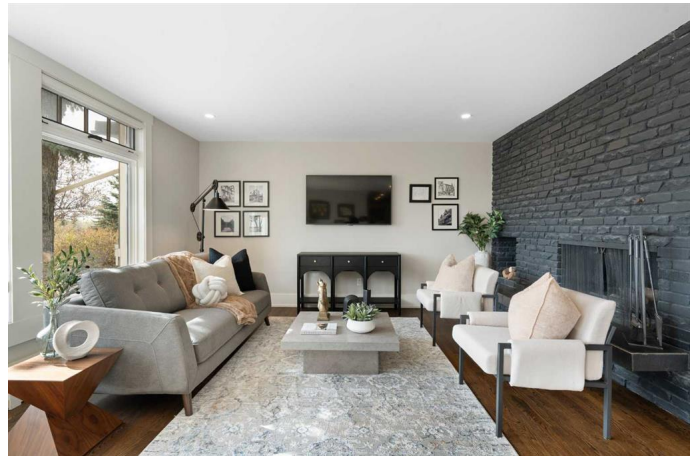
Residential on 0.17 Acres

Altadore, Calgary, Alberta

A rare and extraordinary offering—this fully renovated mid-century modern masterpiece sits proudly on a 68' x 110' west-backing lot, directly facing River Park with panoramic city skyline views. Located in the heart of Altadore, 4815 14A Street SW boasts 4 bedrooms, 4 bathrooms, and nearly 3,800 sq ft of exquisitely designed living space across three stunningly crafted levels.

Step inside to discover 2,693 sq ft above grade, where soaring ceilings, a show-stopping glass-paneled staircase, and floor-to-ceiling windows create an ambiance of refined elegance. The heart of this home is a true culinary showpiece—featuring dual fridges, ovens, dishwashers, and sinks, endless quartz countertops, custom cabinetry, and a butler's pantry with a wine fridge and espresso bar. Massive west-facing windows flood the main level with natural light, offering seamless access to a lush, private backyard oasis with mature trees and an oversized patio—perfect for entertaining or peaceful relaxation.

The expansive living room exudes sophistication with a bold black-painted mid-century brick fireplace, while the cozy family room invites intimate moments around a gas fireplace. A thoughtfully designed mudroom with custom lockers, a sink, and a powder room completes the main floor.



Upstairs offers four bedrooms (or 3 + a versatile office/den) and two beautifully updated bathrooms, including a luxurious primary retreat with showstopping park + city views, a spa-inspired ensuite with soaker tub, glass shower, double vanity, and a fully customized walk-in closet.

The fully finished lower level offers 1,099 sq ft of flexible space, including a large rec room, guest bedroom with a sleek 3-piece ensuite, a dedicated laundry room, storage spaces, and a bonus wine cellar—all warmed by radiant in-floor heating.

Additional upgrades include an oversized heated garage + parking pad, extensive smart-home touches, radiant floor heating in all bathrooms and basement, and a full video surveillance & alarm system.

All this, in one of Calgary’s most sought-after communities—steps from the Elbow River pathways, top-rated schools, tennis courts, Marda Loop’s boutiques and dining, and a quick commute downtown. This iconic property offers the ultimate blend of luxury, lifestyle, and location.

Built in 1957

Essential Information

MLS® #	A2219622
Price	\$2,490,000
Bedrooms	5
Bathrooms	4.00
Full Baths	3
Half Baths	1
Square Footage	2,694
Acres	0.17
Year Built	1957

Type	Residential
Sub-Type	Detached
Style	2 Storey
Status	Active

Community Information

Address	4815 14a Street Sw
Subdivision	Altadore
City	Calgary
County	Calgary
Province	Alberta
Postal Code	T2T 3Y5

Amenities

Parking Spaces	3
Parking	Double Garage Attached
# of Garages	1

Interior

Interior Features	Beamed Ceilings, Built-in Features, Bar
Appliances	Bar Fridge, Built-In Oven, Dishwasher, Gas Cooktop, Range Hood, Refrigerator, Washer/Dryer, Wine Refrigerator, Built-In Refrigerator
Heating	Boiler, Natural Gas
Cooling	Wall Unit(s)
Fireplace	Yes
# of Fireplaces	2
Fireplaces	Gas, Living Room, Wood Burning, Brick Facing
Has Basement	Yes
Basement	Finished, Full

Exterior

Exterior Features	Garden, Private Yard
Lot Description	Back Lane, Back Yard, Front Yard, Lawn, Many Trees, Other, Private, Rectangular Lot, Treed, Underground Sprinklers, Flag Lot
Roof	Asphalt Shingle
Construction	Wood Siding
Foundation	Poured Concrete

Additional Information

Date Listed	May 9th, 2025
Days on Market	47
Zoning	R-CG

Listing Details

Listing Office	eXp Realty
----------------	------------

Data is supplied by Pillar 9â„¢ MLS® System. Pillar 9â„¢ is the owner of the copyright in its MLS® System. Data is deemed reliable but is not guaranteed accurate by Pillar 9â„¢. The trademarks MLS®, Multiple Listing Service® and the associated logos are owned by The Canadian Real Estate Association (CREA) and identify the quality of services provided by real estate professionals who are members of CREA. Used under license.